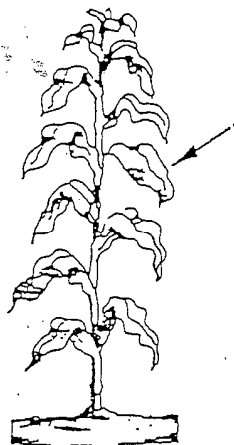


Corn

Seedling

Sample entire above ground portion of 20 plants.

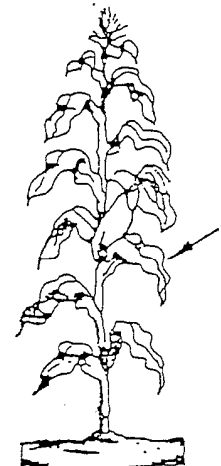


Prior to tasseling

Sample fully developed leaf below the whorl. Sample 15 plants.

Tasseling through silking

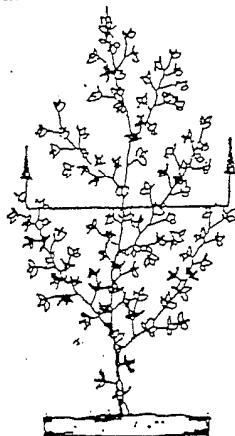
Sample ear leaf or leaf opposite and below ear. Sample 15 plants.



Alfalfa, Clovers, Trefoll and Legumes

6" to early bloom

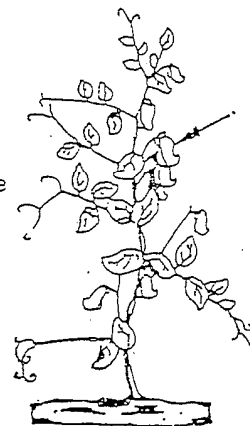
Sample top 6" or top one-half of plant if plant is less than 8" tall from 35 plants.



Soybeans, Field Beans and Peas

Prior-to or during initial flowering.

Sample first fully developed trifoliate and petiole from the top of 25 plants



Small Grains & Grasses Seedling

Seedling

Sample entire above ground portion of 40 plants.

Prior to head emergence
Sample top leaves down to 4th or 5th leaf from 50 plants.



Grain Sorghum or Sorghum-Sudan

Prior to head emergence.

Sample 2nd fully developed leaf from the top of 20 plants.

